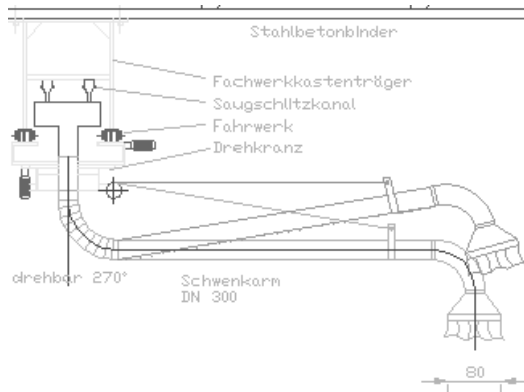


Locomotive Exhaust Extraction



The **problem** of exhaust gas extraction concerns as well in garages of railroad companies. Especially during the starting of the diesel engine you get high exhaust gas concentrations at the workplace. Additionally it is difficult to reach the exhaust pipes on the roof. The use of hoses and funnels with large diameter is heavy.



With suction technology from ecovent you get solutions from one of the leading manufacturer in Germany. Trust our experience of many years at a lot of big vehicle manufacturers. For **applications** with the Deutsche Bahn we developed standard components, which can be adapted individually to the local conditions. The exhaust gases are completely extracted by dedicated exhaust hoods with neoprene bordering. That avoid damages at the trains.

The possibilities on one view:

- Suction arms for wall- or beam mounting with an exhaust rail arm. Within the reachable area each point can be connected. Because of the double exhaust rail with the system AS 440 or AS 590 it is possible to realize air flow rates of over 10.000 m³/h. The maximum arm length is up to 10m.
- Suction arms as tubing arms rideable along the exhaust rail. You are able to reach each point in the planned area.

The advantages:

- Large use of standard construction units of the common system AS from ecovent
- Planning and realization of the plant after customer's request
- High temperature design of the installations
- Radial fan with backwards-curved blades for high efficiency
- Regulation of suction power by two speed motors or frequency inverter
- Electric drive for driving and swivelling
- Control by remote control or hanging tablet

Planing and References:

We provide you gladly a non-committal offer. Or you receive information from reference locations. Please get in contact with our technical office in Luebbecke.

© by ecovent, 32312 Luebbecke, fon: +49.5741.3016-0. Technical changements reserved.